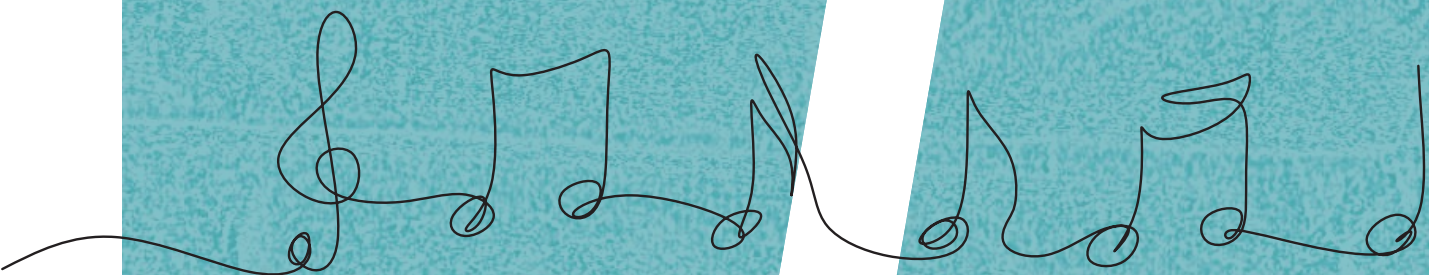




# MusikDurchblick

## STARTERPAKET

### Grundlagen der Musiktheorie



Notensystem • Notenwerte • Oktavlagen  
Chromatik • Tonleitern • Klaviatur



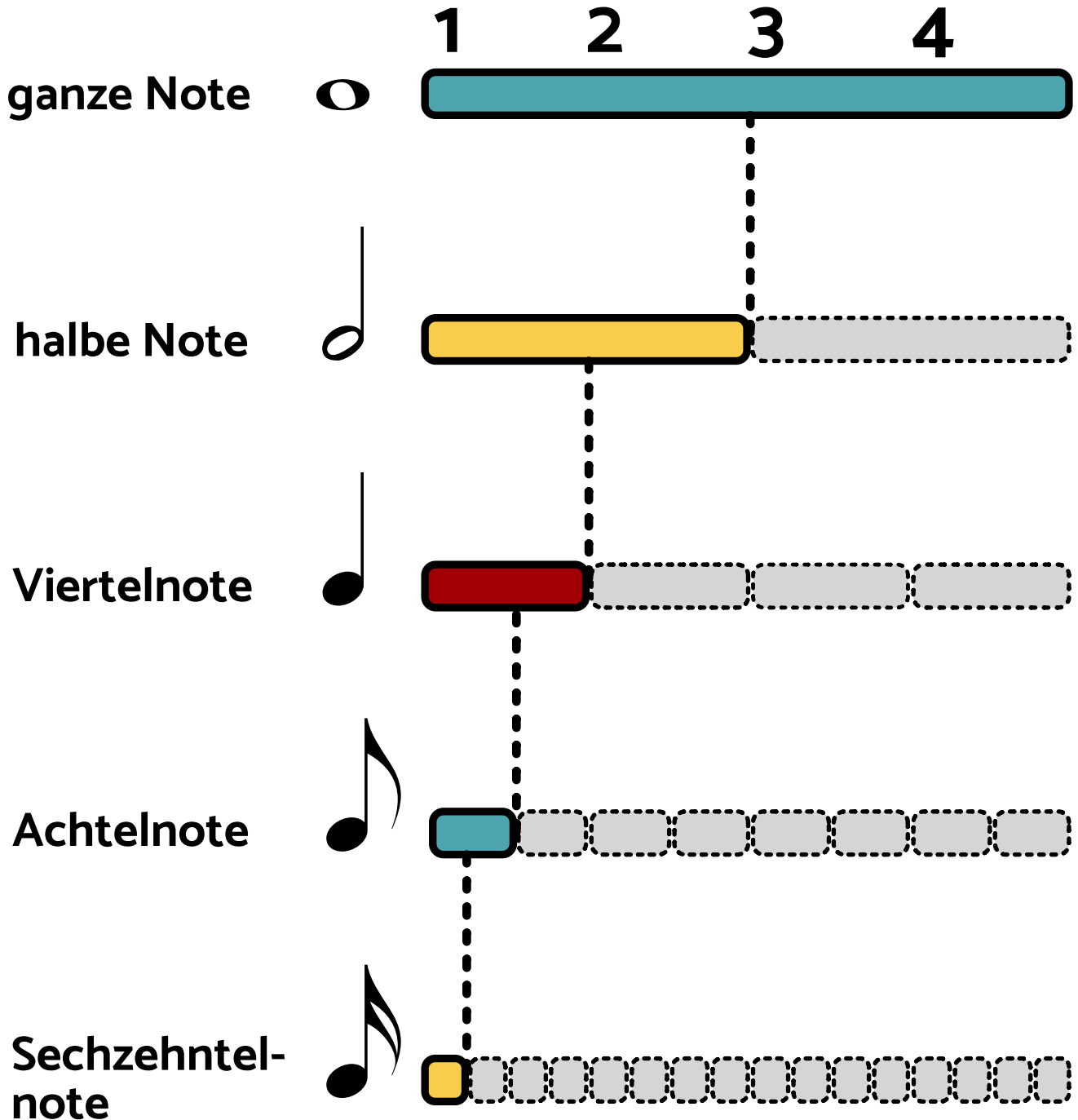
# Notensystem

The diagram illustrates the components of a musical staff. It features a five-line staff with a treble clef (Notenschlüssel) on the left. The key signature (Vorzeichen) consists of two sharps (F# and C#). The time signature (Taktart) is 4/4. A tempo marking (Tempoangabe) of a quarter note = 70 is shown in a red box above the staff. A red oval highlights the bar line (Taktstrich) that divides the staff into measures. The staff contains several musical notes, including quarter and eighth notes.





# Notenwerte





# Oktavlagen

The diagram illustrates four types of octaves on a piano keyboard and their corresponding musical notation. Vertical yellow bars separate the four sections, and dashed vertical lines align the notes on the staves.

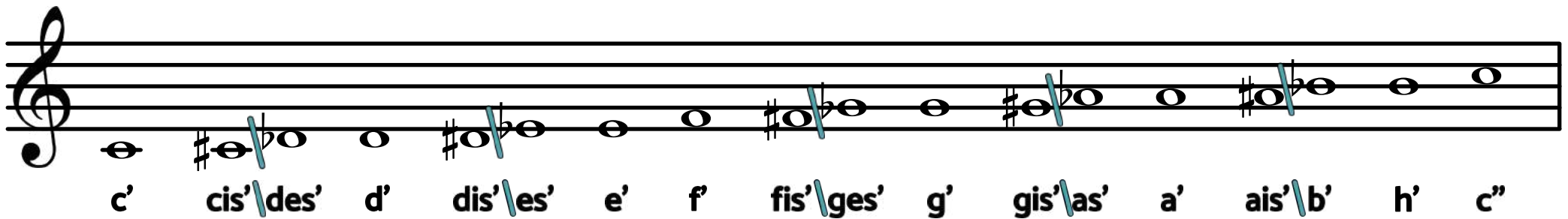
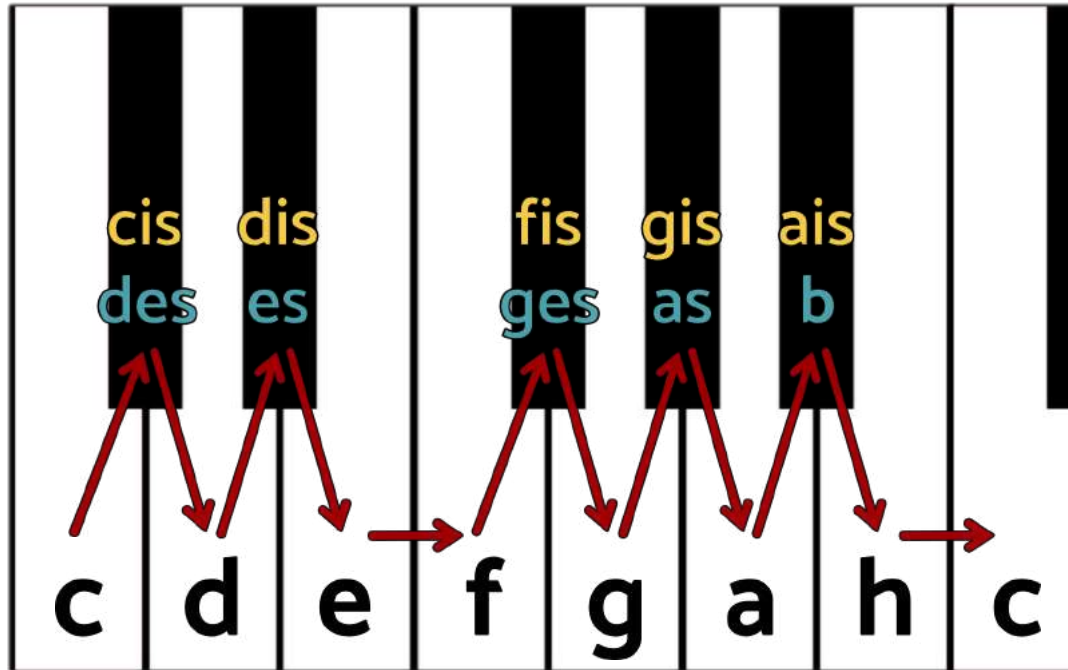
- große Oktave:** Shows the interval between C and C<sup>1</sup> (C2 and C3). The notes are on the same staff (treble clef).
- kleine Oktave:** Shows the interval between c and c<sup>1</sup> (C3 and C4). The notes are on the same staff (treble clef).
- eingestrichene Oktave:** Shows the interval between c<sup>1</sup> and c<sup>2</sup> (C4 and C5). The notes are on the same staff (treble clef).
- zweigestrichene Oktave:** Shows the interval between c<sup>2</sup> and c<sup>3</sup> (C5 and C6). The notes are on two staves (treble and bass clef).

Labels at the bottom of the diagram: große Oktave, kleine Oktave, eingestrichene Oktave, zweigestrichene Oktave.





# Chromatische Tonleiter



→ = Halbtonschritt

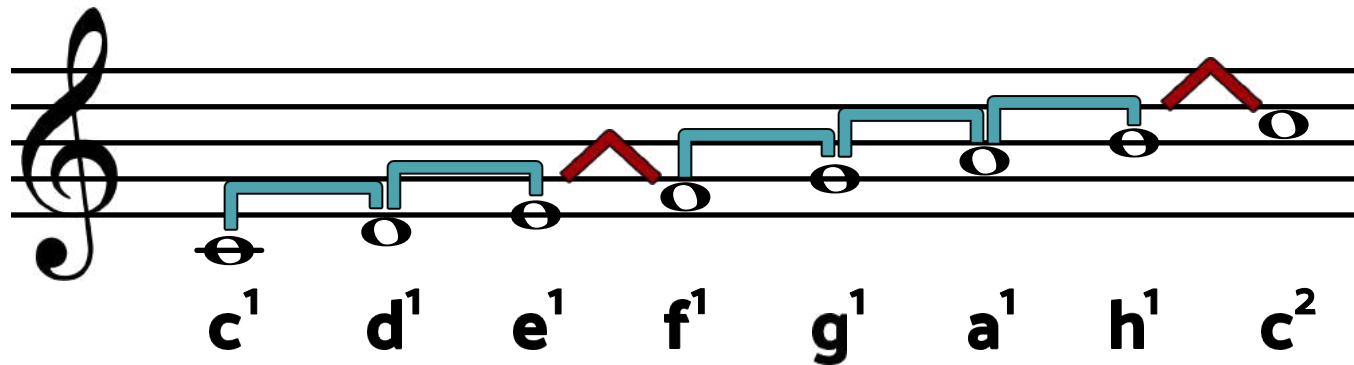




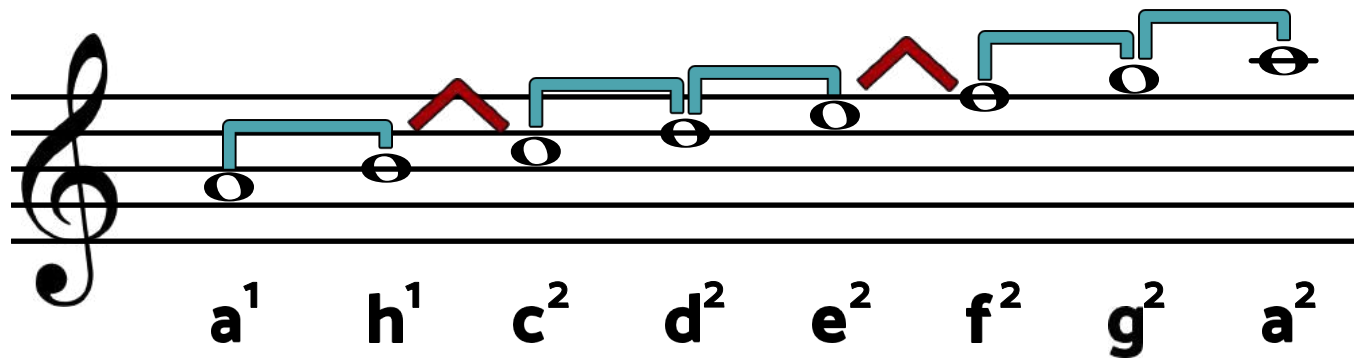
# Tonleitern



## C-Dur Tonleiter



## A-Moll Tonleiter



# Klaviatur

